

Sainsbury Laboratory, University of Cambridge

Study and research facilities



Luke Hughes

Furniture in Architecture

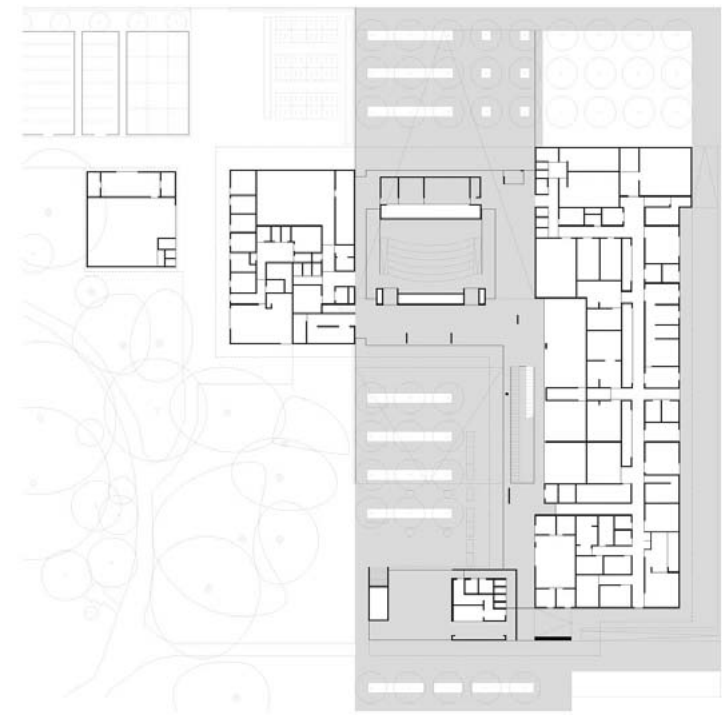
The Sainsbury Laboratory, an 11,000 square metre research centre dedicated to plant science, is located within the Cambridge University Botanic Garden and is home to 120 scientists and 30 support staff. Designed by London-based architectural practice Stanton Williams, the building responds to the picturesque surrounding landscape with ease whilst providing a stimulating environment for research and collaboration.

Completed in 2010, the building comprises laboratories, support areas, meeting spaces, the university's herbarium as well as a public café and seminar room.

Luke Hughes was appointed to work closely with the architects from the outset to design and procure all the furniture. The project has been a perfect example of one of the tenets of the *Luke Hughes* design philosophy; that in any building the connection between the architecture and the furniture should be seamless.

Cover: Exterior of the Sainsbury Laboratory, credit: Hufton + Crow/VIEW

Below: Public garden café with oak and brushed stainless steel tables, credit: Hufton + Crow/VIEW



Above: Site plan, credit: Stanton Williams



Formed of limestone and concrete, the building is spread over two upper storeys and a basement. Extensive use of glazing provides views into the courtyard and botanic garden, establishing internal areas as part of the outdoor landscape.

The duty of the laboratory is to ensure the 'long term security of a sustainable supply of food and other plant products, such as fuel, fibres and building materials'. This, along with the materiality of the building, formed the inspiration for the harmonious materials palette of oak, hand-brushed stainless steel and pewter leather. The colour of the leather was chosen to match the powder-coated mild steel glazing stanchions.

Funding for the project was provided by Lord Sainsbury's Gatsby Foundation.

Below: Chairs in pewter leather, bespoke oak and brushed stainless steel coffee table
Opposite page: Refectory area with bespoke oak and brushed stainless steel dining tables



Breakout areas with bespoke leather and oak benches and oak coffee tables, credit: Hufton + Crow/VIEW



The design reconciles complex scientific requirements with the need for a sustainable building - one that also provides a collegiate, stimulating environment for research and collaboration.

In addition to academia the building offers a range of informal spaces for discussion and quiet study, creating the perfect spaces for comfortable soft seating.

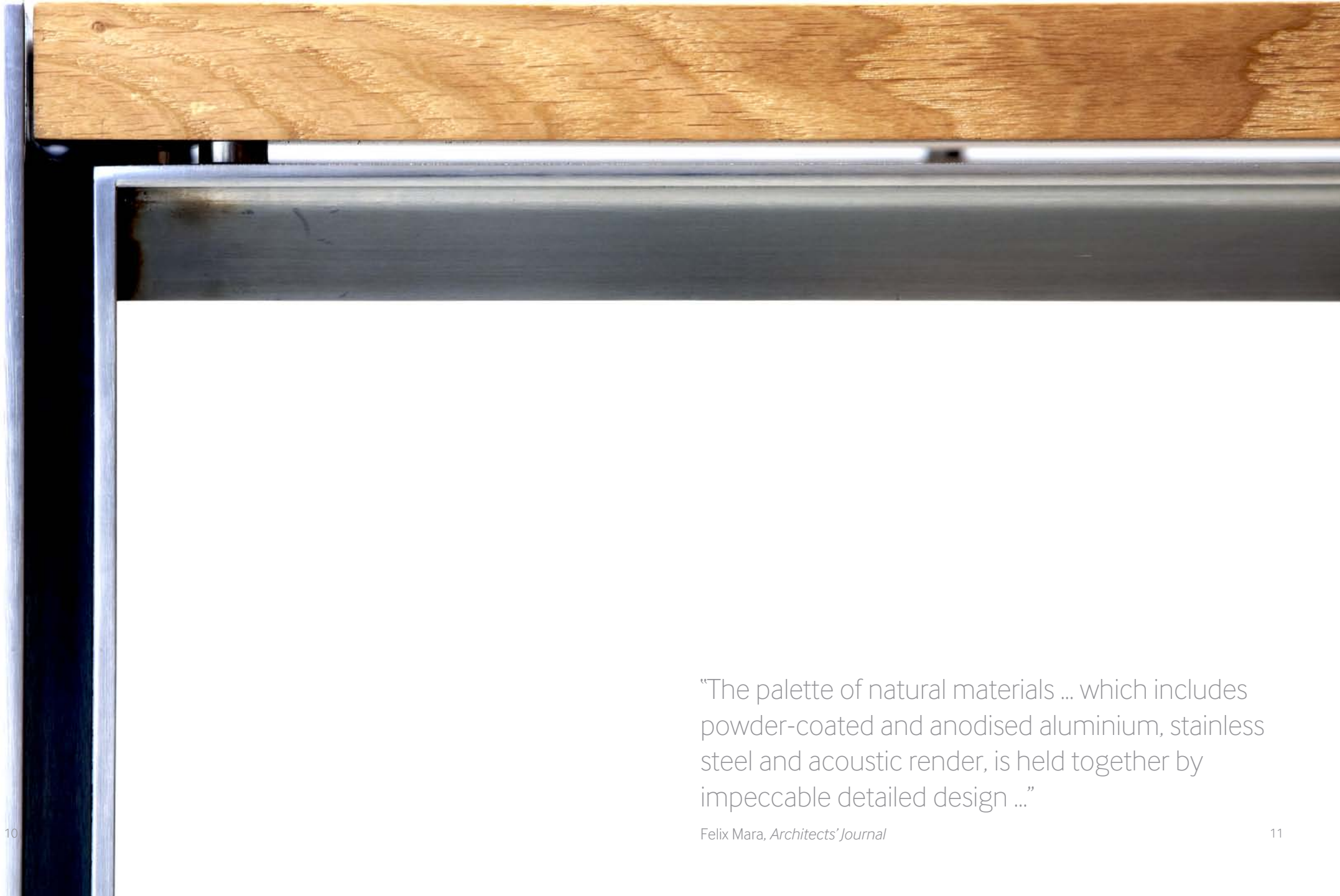
“It is entirely unlike most research buildings, a far cry from the usual warrens of endless corridors and closed doors behind which new discoveries are squirrelled away.”

Oliver Wainwright, *Guardian*

Leather and steel soft seating with oak and steel coffee tables; stainless-steel is hand-brushed



Detail showing oak and brushed stainless steel joint of bespoke table



“The palette of natural materials ... which includes powder-coated and anodised aluminium, stainless steel and acoustic render, is held together by impeccable detailed design ...”

Felix Mara, *Architects' Journal*

Custom auditorium seating upholstered in pewter leather with steel legs and podium in seamless steel with AV integration; stainless-steel is hand-brushed





To suit the many different ways of working; furniture was designed for private offices, open-plan study areas, and meeting spaces for group and independent study.

Opposite: oak and steel credenza

Below: oak and steel round desk

Bottom: pewter leather and steel soft seating, oak and steel side table
Stainless-steel is hand-brushed



Chairs upholstered in pewter leather, oak and brushed stainless-steel coffee table
Background: Semi-private research areas with bespoke pewter desk units and oak partitions



Meeting room with 'Capital' boardroom table in oak



The Sainsbury Laboratory was formally opened by HM the Queen on 27 April 2011. The building has gone on to set a standard for research centres in the UK, having been awarded the coveted **2011 RIBA Stirling Prize for Architecture**, and later being voted the 'best Stirling Prize winner ever' in an *Architects' Journal* readers poll.

“This building is an exciting new typology, with spaces for research juxtaposed with those for education, the private and the public and the highly-technological nurture of nature with the simple enjoyment of an extended botanic garden.”

Royal Institute of British Architects

Below: HM The Queen pictured with Alan Stanton, co-founder of Stanton Williams, at the Laboratory opening
Opposite: Public garden cafe with oak and brushed stainless steel tables, credit: Hufton + Crow/VIEW





History and philosophy

Luke Hughes is an award-winning specialist furniture design company to Britain's best-loved buildings and some of the world's most powerful brands - including 5 Royal palaces, 21 international cathedrals, 54 Oxbridge colleges & 900 boardrooms. A central design principle is that in any quality building, the connection between architecture and furniture should be seamless.

Since 1990, *Luke Hughes* has focused on design for public spaces, particularly in the academic, institutional, ecclesiastical, corporate and leisure sectors - principally for buildings with significant architectural interiors.

Company founder Luke Hughes was educated at Cambridge University before setting up a small craft workshop in the backyard of a house in Bloomsbury in 1978, and then moving to Covent Garden in 1981. The business was incorporated in 1986, and has been growing ever since.

Academic clients

- | | | |
|--|----------------------------------|---------------------------------------|
| All Souls College, Oxford | Jesus College, Cambridge | The Open University |
| Atlantic College | Jesus College, Oxford | The Queen's College, Oxford |
| Bancroft School | Keble College, Oxford | Trinity College, Oxford |
| Bedford School | Keystone Academy, Beijing | Trinity Hall, Cambridge |
| Benenden School | King's College, London | University of Chester |
| Brasenose College, Oxford | Lincoln College, Oxford | University College, London |
| Broomwood Hall School | Liverpool Hope University | University College, Oxford |
| Bryanston School | London School of Economics | University of Birmingham |
| Cambridge Union Society | Marlborough College | University of Dundee |
| Cambridge University Boat Club | Merton College, Oxford | University of Liverpool |
| Cambridge University Botanic Institute | Middlesex University | University of Roehampton |
| Cambridge University Library | New College, Oxford | University of Warwick |
| Cambridge University Press | New Hall, Cambridge | Uppingham School |
| Campion Hall, Oxford | Newnham College, Cambridge | Wolfson College, Cambridge |
| Charterhouse School | Nuffield College, Oxford | Wolfson College, Oxford |
| Christ College, Cambridge | Oundle School | Yale University |
| Christ Church, Oxford | Oxford Centre for Hebrew Studies | Yale National University of Singapore |
| Churchill College, Cambridge | Pembroke College, Cambridge | |
| City of London School | Pembroke College, Oxford | |
| Clare College, Cambridge | Peterhouse, Cambridge | |
| Corpus Christi College, Cambridge | Rhodes House, Oxford | |
| Corpus Christi College, Oxford | Robinson College, Cambridge | |
| Cranleigh School | Royal Academy of Music | |
| Darwin College, Cambridge | Royal Grammar School, Guildford | |
| Downing College, Cambridge | St Anne's College, Oxford | |
| Emmanuel College, Cambridge | St Antony's College, Oxford | |
| Epsom College | St Catharine's, Cambridge | |
| Eton College | St Cross College, Oxford | |
| Giggleswick School | St Edmund's College, Cambridge | |
| Gonville & Caius College, Cambridge | St Edmund Hall, Oxford | |
| Green College, Oxford | St Hugh's College, Oxford | |
| Haberdashers' Aske's Boys School | St John's College, Cambridge | |
| Harrow School | St Paul's Girls' School | |
| Harvard University | St Peter's College, Oxford | |
| Highgate School | Sherborne School | |
| Hughes Hall, Cambridge | Shrewsbury School | |
| Hurstpierpoint College | Sidney Sussex College, Cambridge | |
| Institute of Criminology, Cambridge | Stowe School | |
| | The College of Law | |
| | The King's School Canterbury | |



Public garden cafe with oak and brushed stainless steel tables

Detail of oak 'Capital' boardroom table

